

Self Direction For The Technology Assisted Waiver

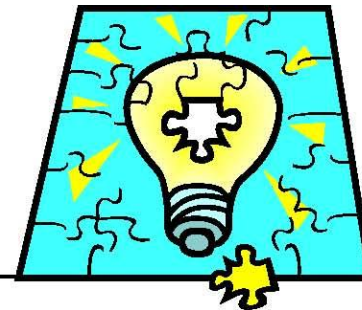
And the KPASS Toolkit

What this training covers:

- What is Self Direction
- How to use the KPASS Toolkit
- A Self Direction Roundtable Discussion



WHAT IS SELF DIRECTION?



Self Direction is a management tool that supports the parents or guardian of a child with technology assistance needs to be in charge of and responsible for the Personal Service Attendants for the child.

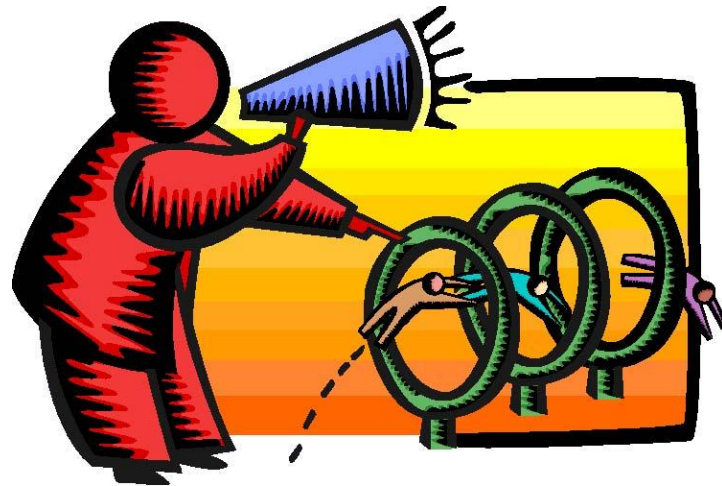
Kansas has three models of service delivery

- ⑩ Agency directed services
- ⑩ Self Directed services
- ⑩ combination of Agency and Self Directed Services



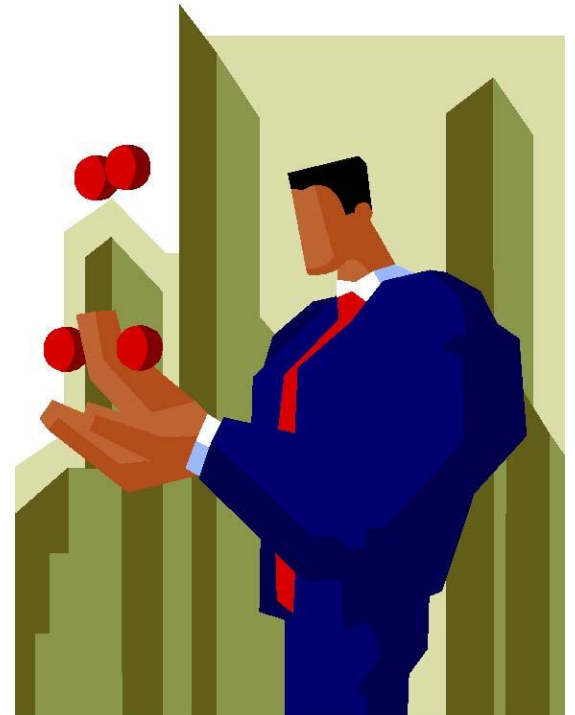
Agency Directed Services

The Home Health Agency is the employer and has the responsibility to provide the nurses or medical service technicians



Self Directed Services

- The Parent or Guardian of the child is the employer
- The Parent or Guardian directs the personal service attendants (PSA)



Self Direction

The Parent or
Guardian of the child
with Technology
Assistance needs is
the employer.



As the employer, you:

- ⑩ Create a job description based on the child's needs
- ⑩ Interview and select the payroll agent
- ⑩ Interview and hire PSA for the child's care
- ⑩ Check employment and personal references



As the employer, you:

- ⑩ Decide what the PSA does and when they do it
- ⑩ Provide training the PSA needs to be successful
- ⑩ Make a backup plan so that the child's supports and services continue if or when a PSA is sick or quits unexpectedly



Benefits of Self Direction

- ⑩ The Parent or Guardian has control of the child's life decisions and resources
- ⑩ Increased satisfaction with living and working conditions
- ⑩ Higher quality of life for the child and family



Using the KPASS toolkit

⑩ The KPASS Toolkit is a comprehensive guide to assist parents or guardians of Technology Assisted children or other individuals in self direction

⑩ It is distributed on CD-ROM, but can be printed from the CD format



KPASS Toolkit Layout

The Toolkit has 10 chapters that address different aspects of self direction, such as:

- ⑩ Selecting a payroll agent
- ⑩ Developing a job description
- ⑩ Training you PSA

Just click on the chapter that best suits your need at the time



KPASS Toolkit Layout

The KPASS toolkit also includes 7 appendices for reference that include:

- ⑩ References and resources
- ⑩ Policies
- ⑩ A job description toolkit

Just click on the appendix which suits your need at the time



Navigation in the Easy to Use Word Format

- ⑩ If you are using the Easy to Use Word Format of the KPASS Toolkit, simply click the topic in the Table of Contents you wish to go to and you will be automatically taken there.
- ⑩ To return to the Table of Contents, simply press the Ctrl and Home buttons at the same time.



If you have trouble using a computer, print out the **KPASS Toolkit**

The toolkit can be printed out one chapter or appendix at a time, or the entire document can be printed at once



Self Direction Round Table Discussion

- ⑩ Developing a job description
- ⑩ Interviewing a PSA
- ⑩ Managing a PSA



For more information:

Contact Kelly Smith, Self
Direction Consultant for
the Self Advocate Coalition
of Kansas

(785) 749-5588

